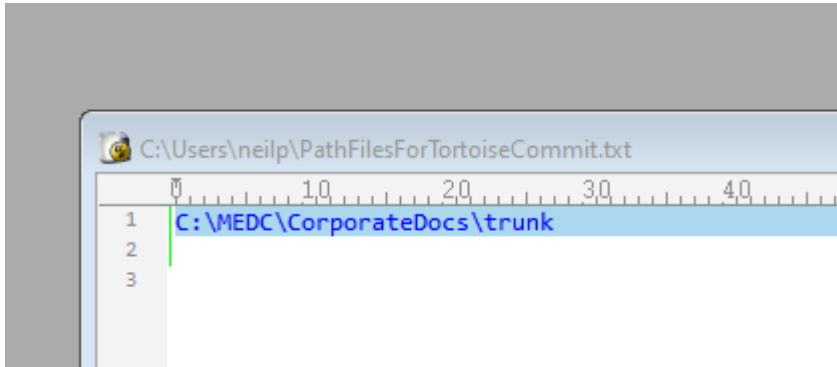


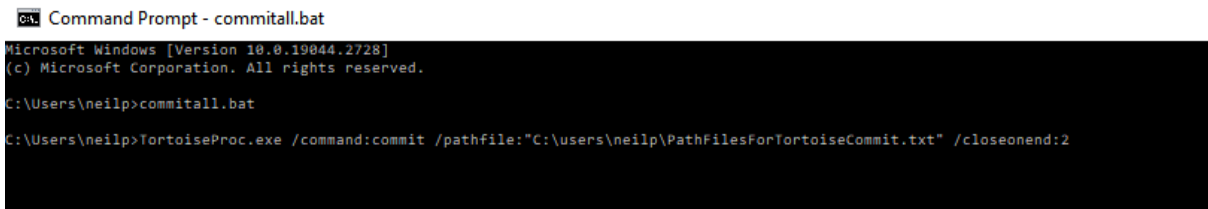
The command in the batch file

TortoiseProc.exe /command:commit /pathfile:"C:\users\neilp\PathFilesForTortoiseCommit.txt" /closeonend:2

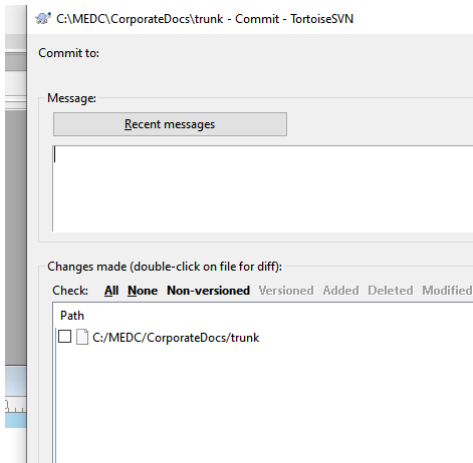
The folder to commit



Batch file run from the command prompt

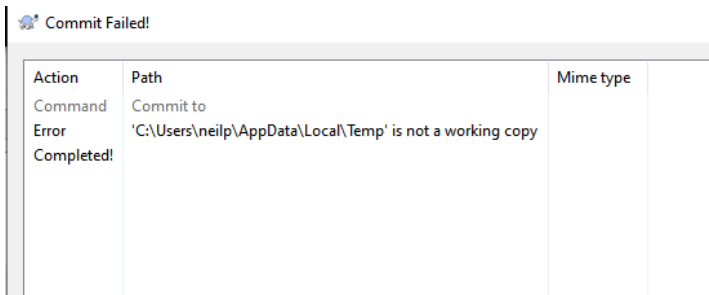


The GUI pops up



Check the box and click OK ...

The resultant error message

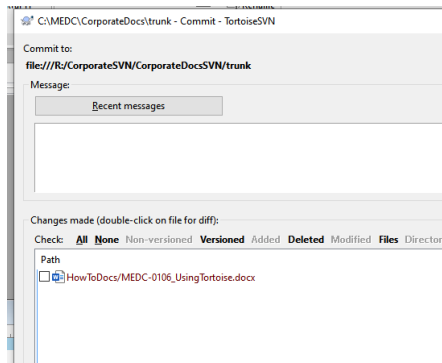


Why that path?

If I run

```
TortoiseProc.exe /command:commit /path:"C:\MEDC\CorporateDocs\trunk\" /closeonend:2
```

I get



Check the box, click OK and it works.

(And why do I have to check the box, the file is already under version control?)