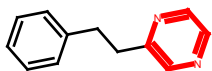


MOLECULES THAT CONTAIN SUBSTRUCTURES NOT PRESENT IN THE GIVEN FRAGMENTS

These are molecules that contain atom topologies not present in the fragment library given. The atoms highlighted in red are the atom topologies not present.

All fragments that are substructures of the drug molecule on the left are listed on the right that are contained.

NotFullyCovered



CH4