

Friendly game played against primarily Danny and Jeff.

○ Holy Family Team

● Sylvan, Kayvan A

Holy Family Chess (1)

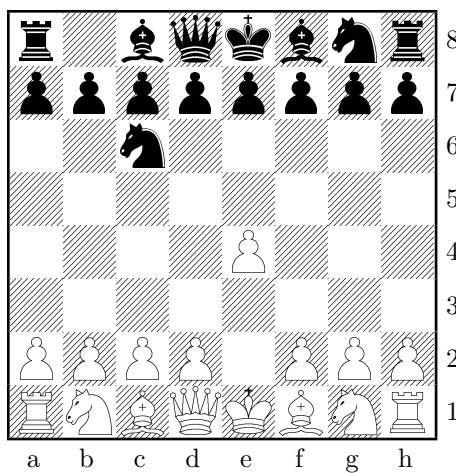
Holy Family Educational Center

2001.05.11

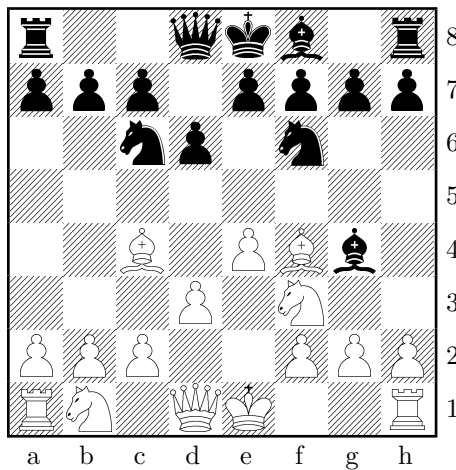
0-1

B00j

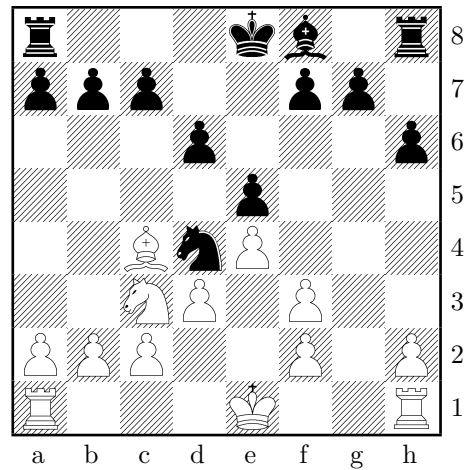
1. e4 ♘c6 D



This is the Nimzowitsch defense. Named after the master of strategy, Aaron Nimzowitsch. I use it because it is flexible and surprises people. 2. ♕c4 d6 3. ♖f3 ♘f6 4. d3 ♕g4 5. ♕f4?! D

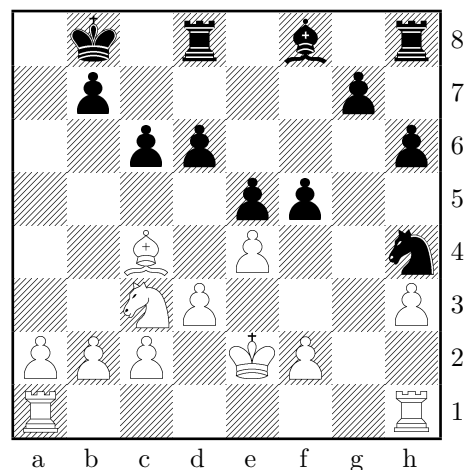


This move loses a tempo. 5... e5 6. ♕g5 h6 7. ♕xf6 ♖xf6 8. ♖c3 ♕xf3 9. ♖xf3 ♖xf3 10. gxf3 ♘d4 D



White looks like he is in a bit of trouble. Looks like the c and f-pawns can not both be defended. 11. O-O-O

(11. ♘b5!? This is much better, leading to... 11... ♖xf3+ 12. ♖d1 O-O-O 13. ♖e2 ♘h4 14. ♖xa7+ ♖b8 15. ♖b5 c6 16. ♖c3 f5 ♚ With a roughly equal position. 17. h3 D

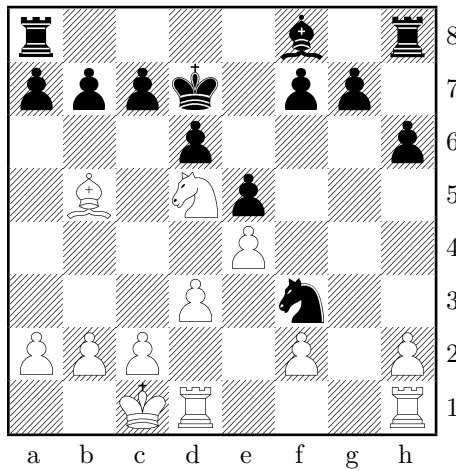


The final position for the possible outcome of 11. Nb5)

11... ♖xf3 12. ♖d5 ♖d7

(12... O–O–O This is also good. Black has a clear advantage.)

13. ♖b5+? D



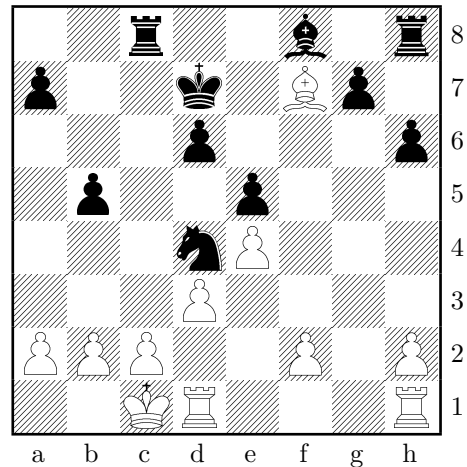
This loses a piece and the game.

(13. ♖e3 This is much better. Or even:)

(13. h4 With the idea of booting the knight from f3. A plausible continuation would be: 13... c6 14. ♖h3 cxd5 15. ♖b5+ ♔e7 16. ♖xf3 ♖ White has some compensation for the pawn, though I would still say that Black has a small edge.)

13... c6 14. ♖a4 b5 15. ♖b3 cxd5 16. ♖xd5 ♖c8 Where else? This is the natural place for this rook. 17.

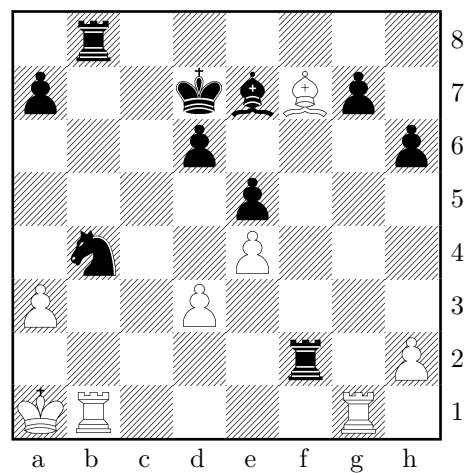
♖xf7 ♖d4 D



18. c3 b4 19. a3? The only way to prolong the game is by escaping with Kd2 19... bxc3 20. bxc3 ♖xc3+ 21. ♔b2 ♖c2+ 22. ♔b1 ♖e7 The other rook now enters the fray 23. ♖hg1 ♖b8+ 24. ♔a1 ♖xf2 Clearing the c2 square for the knight 25. ♖b1 This natural move leads to a quick mate, but there is no real defense. 25... ♖c2+ 26. ♔a2 ♖b4+ !?

(26... ♖xa3+!! is even better 27. ♔a1 (27. ♖xa3 d5+ Leads to a quick mate) 27... ♖xb1 28. ♖xb1 ♖xb1+ 29. ♔xb1 ♖xf7 +- Black has an overwhelming material advantage)

27. ♔a1 D



Leads to a surprise finish. All continuations were losing.
27... ♖**a2+!!** Forcing Black to blockade the king's only
escape from the coming knight check. **28.** ♙**xa2** ♞**c2#**
0-1
