

Friendly game played against primarily Danny and Jeff.

○ Holy Family Team

● Sylvan, Kayvan A

Holy Family Chess (1)

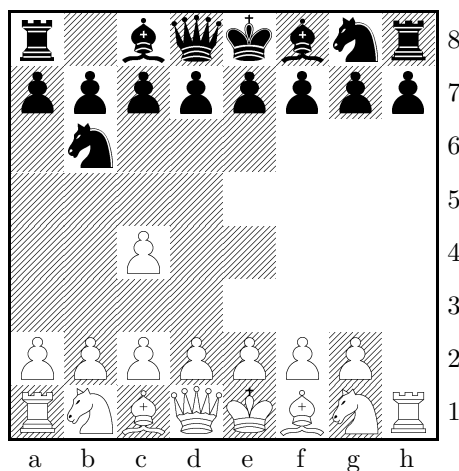
Holy Family Educational Center

2001.05.11

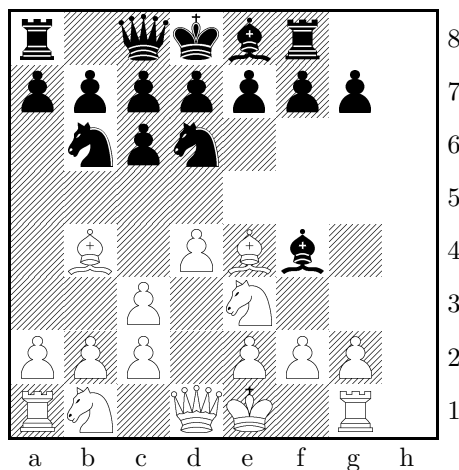
0-1

B00j

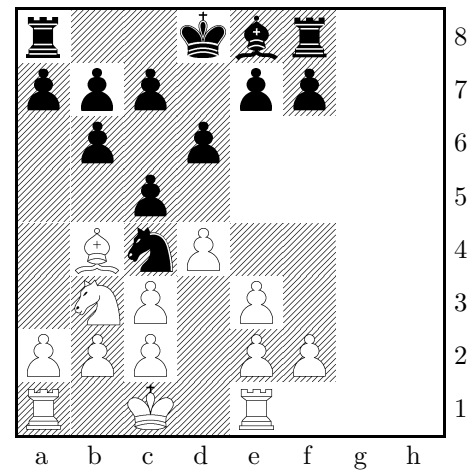
1. e4 ♘c6 D



This is the Nimzowitsch defense. Named after the master of strategy, Aaron Nimzowitsch. I use it because it is flexible and surprises people. 2. ♙c4 d6 3. ♘f3 ♘f6 4. d3 ♙g4 5. ♙f4?! D



This move loses a tempo. 5... e5 6. ♙g5 h6 7. ♙xf6 ♙xf6 8. ♙c3 ♙xf3 9. ♙xf3 ♙xf3 10. gxf3 ♙d4 D



White looks like he is in a bit of trouble. Looks like the c and f-pawns can not both be defended. 11. O-O-O

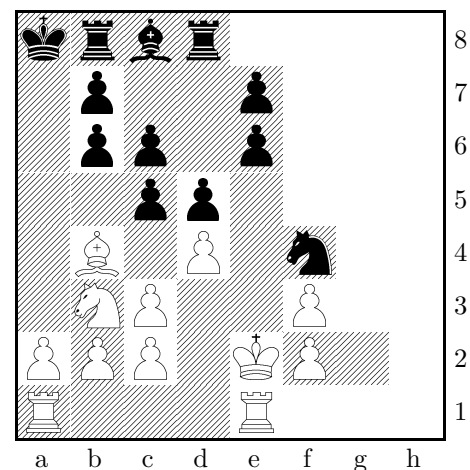
(11. ♘b5!? This is much better, leading to...

11... ♙xf3+ 12. ♙d1 O-O-O 13. ♙e2 ♘h4

14. ♙xa7+ ♙b8 15. ♙b5 c6 16. ♙c3 f5

♚ With a roughly equal position. 17. h3

D

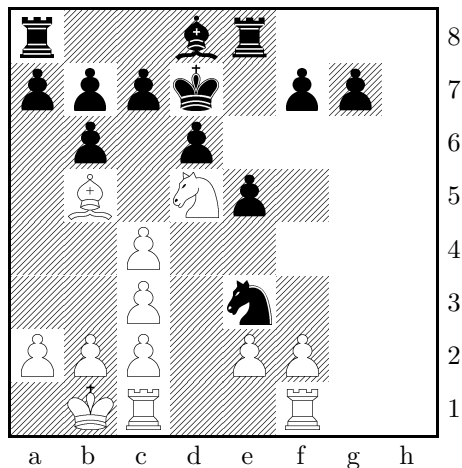


The final position for the possible outcome of 11. Nb5)

11... ♙xf3 12. ♙d5 ♙d7

(12... O–O–O This is also good. Black has a clear advantage.)

13. ♖b5+? D



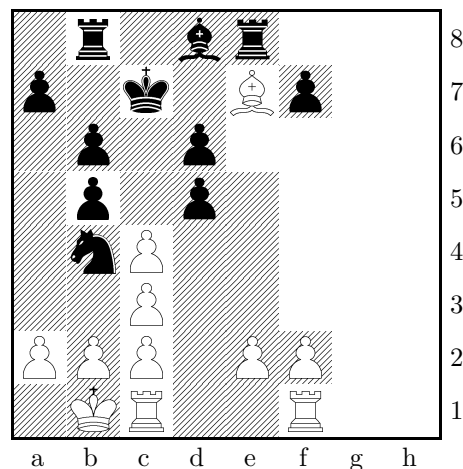
This loses a piece and the game.

(13. ♜e3 This is much better. Or even:)

(13. h4 With the idea of booting the knight from f3. A plausible continuation would be: 13... c6 14. ♜h3 cxd5 15. ♖b5+ ♔e7 16. ♜xf3 ♞ White has some compensation for the pawn, though I would still say that Black has a small edge.)

13... c6 14. ♖a4 b5 15. ♖b3 cxd5 16. ♖xd5 ♜c8 Where else? This is the natural place for this rook. 17.

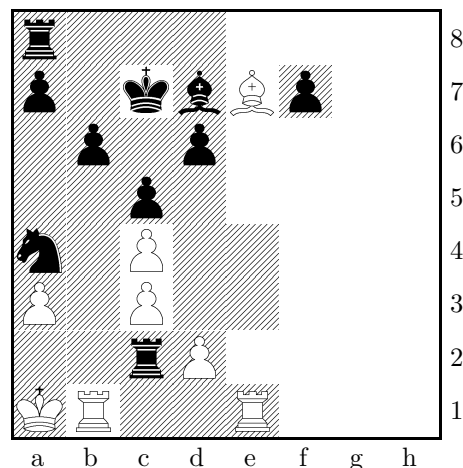
♜xf7 ♞d4 D



18. c3 b4 19. a3? The only way to prolong the game is by escaping with Kd2 19... bxc3 20. bxc3 ♜xc3+ 21. ♜b2 ♜c2+ 22. ♜b1 ♜e7 The other rook now enters the fray 23. ♜hg1 ♜b8+ 24. ♜a1 ♜xf2 Clearing the c2 square for the knight 25. ♜b1 This natural move leads to a quick mate, but there is no real defense. 25... ♜c2+ 26. ♜a2 ♜b4+ !?

(26... ♜xa3+!! is even better 27. ♜a1 (27. ♜xa3 d5+ Leads to a quick mate) 27... ♜xb1 28. ♜xb1 ♜xb1+ 29. ♜xb1 ♜xf7 +- Black has an overwhelming material advantage)

27. ♜a1 D



Leads to a surprise finish. All continuations were losing.
27... ♖a2+!! Forcing Black to blockade the king's only
escape from the coming knight check. **28.** ♙xa2 ♜c2#
0-1
